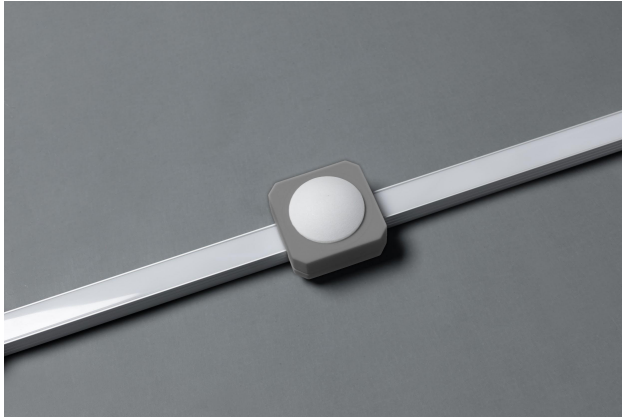


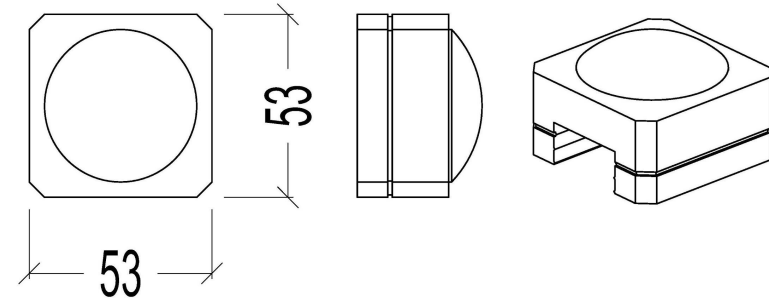
## Pixelino

PX-RD77

The Pixelino luminaires can be ordered free standing on the cable or mounted in the aluminum channel at intervals of 5 to 99 cm. The DMX addresses for the control do not have to be set separately, but are distributed fully automatically.



## Product Dimension Drawings



## Technical Specification

Operation Voltage	24 VDC
Power Consumption	1.5 W
Luminous Flux	110 lm
Viewing Angle *	170° Diffuse
Color LED	RGBW
Color Fixture	Light-grey
Material	Polycarbonate UV-Stabilized
IP Grade	IP65
Ambient Temperature Range	-40°C - +50°C
Accessories	Aluminium Channel 16 x 13 mm with PC Cover
Control Mode	DMX 512

\* IES file available on request